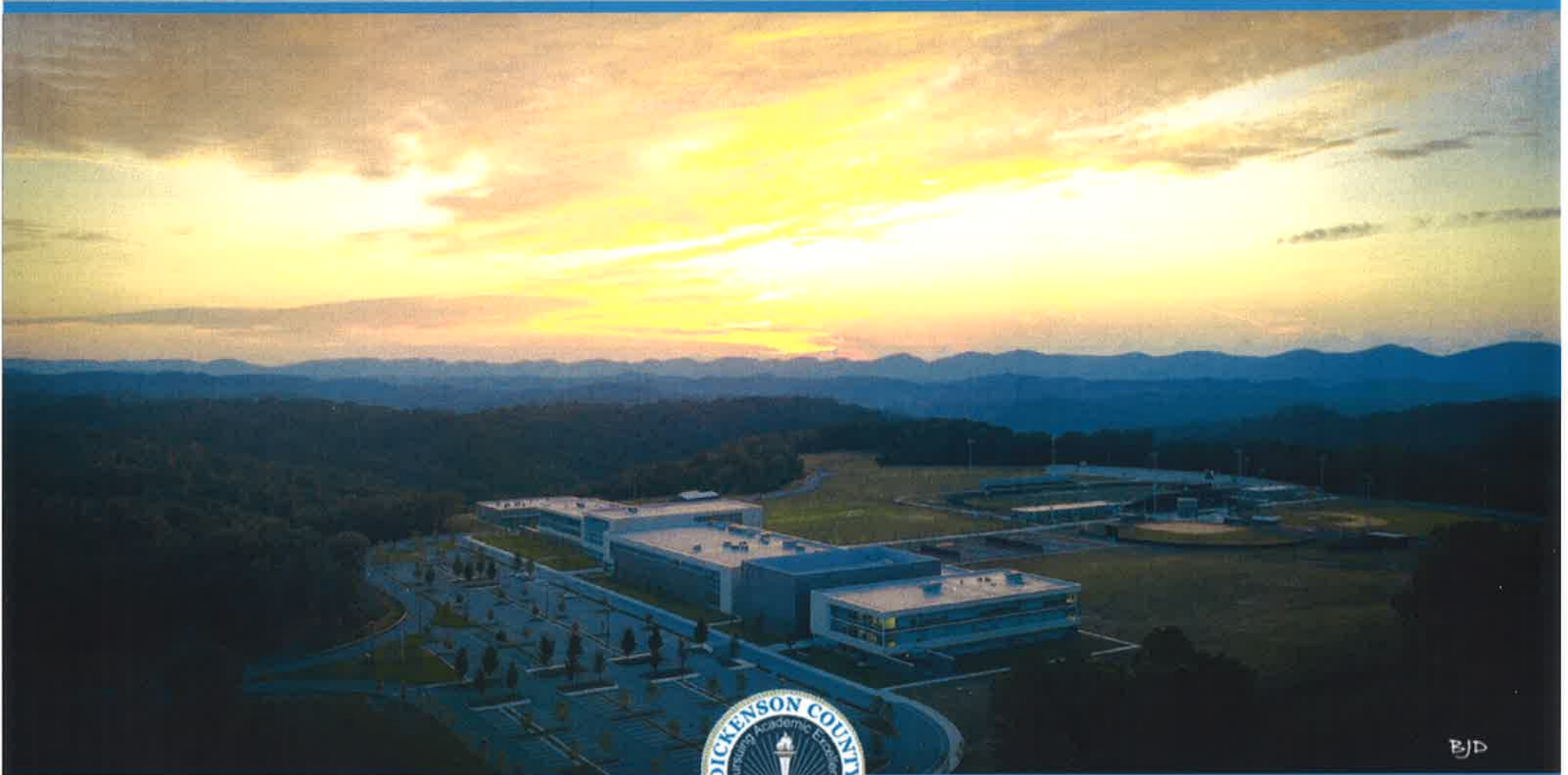


RIDGEVIEW HIGH/MIDDLE SCHOOL INDOOR BATTING FACILITY

DICKENSON COUNTY PUBLIC SCHOOLS



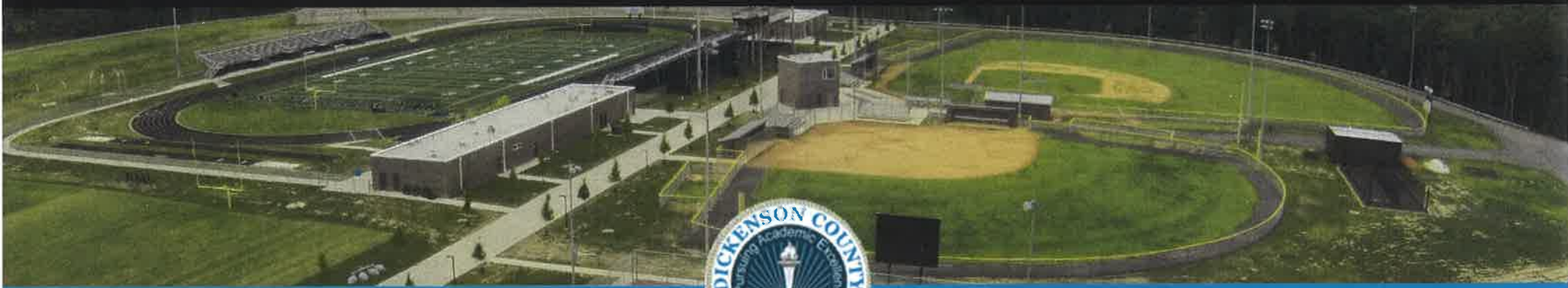
EJD

RIDGEVIEW HIGH/MIDDLE SCHOOL INDOOR BATTING FACILITY

DICKENSON COUNTY PUBLIC SCHOOLS

EXISTING FACILITIES

- We have state-of-the-art facilities – both educational and athletic.
- Shared pressbox/concession and restroom facilities.
- One (1) much appreciated batting cage (constructed by McFall Excavating)
 - Open to elements.
 - Elements will require higher/more frequent maintenance such as stone replacement/addition and net replacement.
 - Cannot utilize in low temperature months or rainy days.
- Six teams vying for opportunity to utilize while also maintaining a practice schedule.

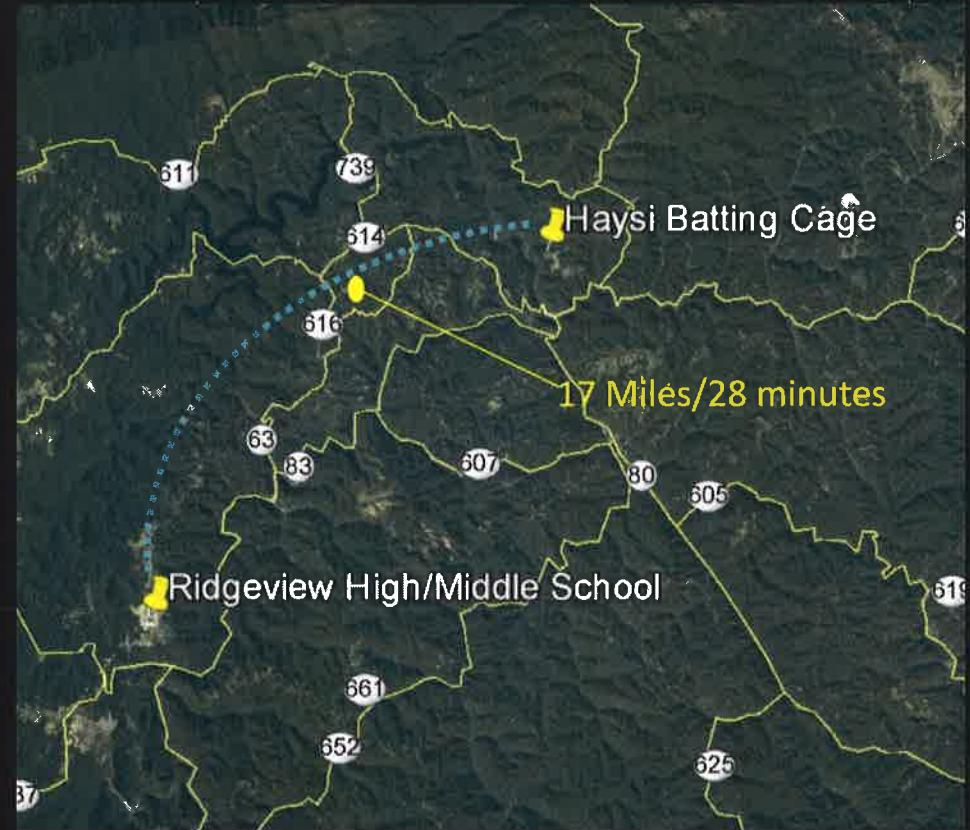


RIDGEVIEW HIGH/MIDDLE SCHOOL INDOOR BATTING FACILITY

DICKENSON COUNTY PUBLIC SCHOOLS

LOGISTICS/SAFETY

- The existing batting facility located in Clintwood is now utilized by the Ridgeview West Little League Softball and Baseball programs.
- Although, not mandated by any coaching staff - currently, athletes travel to the existing Haysi batting cage on rainy days.
- 17 Miles/28 minute drive.
- This creates potential problems relating to safety.
- Many times, students will carpool.
- The proposed indoor batting facility will eliminate the need for student travel.



RIDGEVIEW HIGH/MIDDLE SCHOOL INDOOR BATTING FACILITY

DICKENSON COUNTY PUBLIC SCHOOLS

PROPOSED FACILITY

- To be located adjacent to the existing maintenance facility between fields.
- Facility shall be 40'x80' (3,200 sq. ft.).
- Wood frame structure.
- Concrete on-slab floor with indoor/outdoor carpet material.
- Two parallel batting cages.
- Matching color as those on campus.
- Natural Gas heating during low temperature months.
- No air conditioning - Garage door to allow air flow during high temperature months.



RIDGEVIEW HIGH/MIDDLE SCHOOL INDOOR BATTING FACILITY

DICKENSON COUNTY PUBLIC SCHOOLS

PROPOSED FACILITY - *Continued*

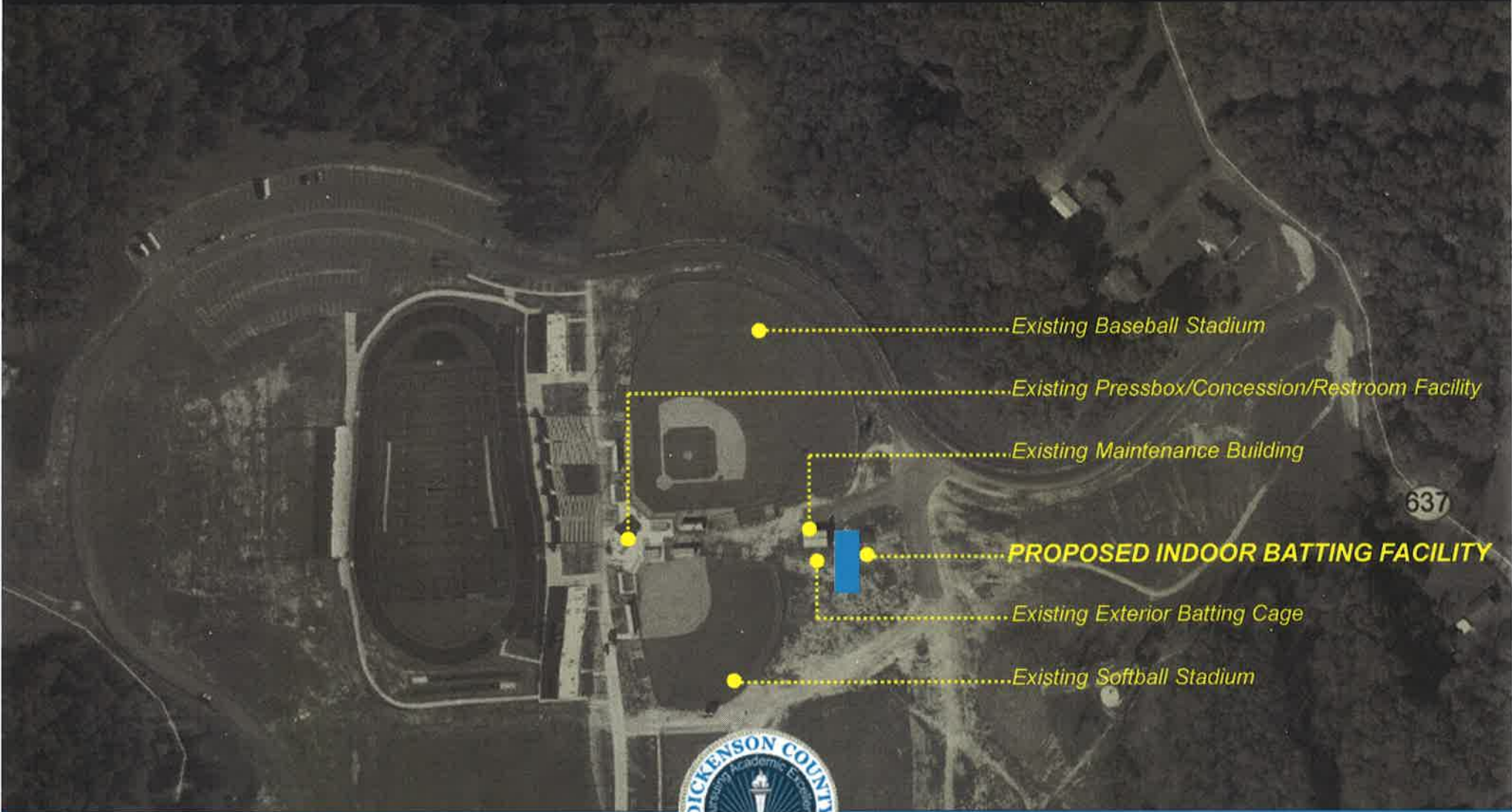
- Wood Frame Building - \$49,950
- Waterline Relocation - \$3,000
- 100 Ton/Stone - \$2,500
- 40 Yards/Concrete - \$10,000
- Lighting (50 foot candles) - \$10,000
- Two Heaters @ 60,000 BTU - \$4,000
- Gas Line Extension (950 LF) - \$9,000
- Nets/Hardware - \$2,200
- Indoor/Outdoor Carpet - \$5,000
- Misc. - \$2,000
- **Approximate Cost - \$90,650**



RIDGEVIEW HIGH/MIDDLE SCHOOL INDOOR BATTING FACILITY

DICKENSON COUNTY PUBLIC SCHOOLS

PROPOSED FACILITY - Continued



RIDGEVIEW HIGH/MIDDLE SCHOOL INDOOR BATTING FACILITY

DICKENSON COUNTY PUBLIC SCHOOLS

PROPOSED FACILITY - *Continued*



RIDGEVIEW HIGH/MIDDLE SCHOOL INDOOR BATTING FACILITY

DICKENSON COUNTY PUBLIC SCHOOLS

BENEFITS

- Provides batting/indoor training on a year-round basis – despite weather conditions.
- Shared facility to be utilized by:
 - RHS Softball – Varsity, JV and Middle School
 - RHS Baseball – Varsity, JV and Middle School
 - Dickenson County Little League Travel Teams (both Softball & Baseball)
- Spending time in the batting cages allows the hitter to see the ball numerous times which at the minimum improves hand eye coordination. Other benefits include increasing bat speed, improving pitch selection, forming strong muscle memory, and perfecting the basics of proper hitting mechanics.
- Providing the same training opportunities as other schools in our conference.
- Ridgeview/Dickenson County student athletes need this facility now rather than later.



RIDGEVIEW HIGH/MIDDLE SCHOOL INDOOR BATTING FACILITY

DICKENSON COUNTY PUBLIC SCHOOLS

CONCLUSION

- This project will compliment our already State-of-the-art facilities.
- Provides year-round athletic training despite weather conditions.
- Reduce safety issues related to travel to similar facilities.
- Allows coaching staff(s) to maintain practice schedules and prepare our student athletes to compete at the highest level.
- This facility will provide Dickenson County students athletes the same opportunities as surrounding counties.
- **Ridgeview/Dickenson County students athletes need this facility now rather than later.**

